



POPOVIC & KOLLEGEN

Praxis für Kieferorthopädie

## Adult treatment

### 9. Distaljet

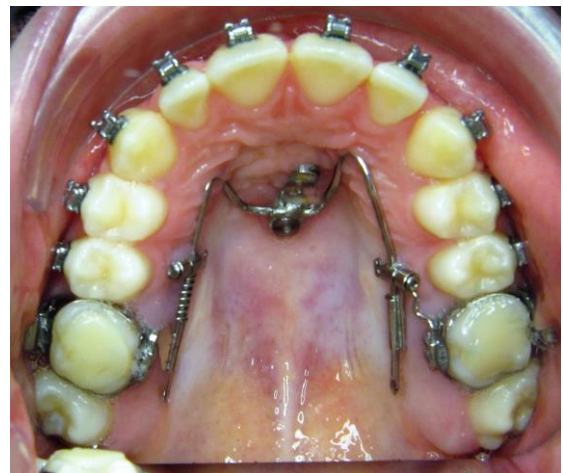
The Distaljet is a fixed appliance that corrects class-II malocclusions, however, here treatment takes place in the upper jaw and not in the lower like with the MARA. Correspondingly, the Distaljet is placed in the upper jaw.

If the upper dental arch is too far in the front, the molars may be moved back with the Distaljet, creating space in the canine and bicuspid area without the need to sacrifice a healthy tooth. The Distaljet appliance can be used both in children and adults. In adults, it can also be used to open gaps for implants or bridges/dentures..

The Distaljet comes with a support in the palate area that incorporates an acrylic pad. In adults, support usually is provided by a mini-implant in the palate area. By way of exception, such a mini-implant can also be used in children and adolescents.



Distaljet appliance with palatal support via acrylic pads



Distaljet appliance with palatal support via mini-implants